



sunrise Shawl

by Jellina Verhoeff

MATERIALS

Color A: Scheepjes Whirllette, Grappa 855 (60%cotton, 40%acryl, 455m/100g)

Color B: Scheepjes Whirl, Red Velvet Sunrise 764 (60%cotton, 40%acryl, 1000m/215g)

3.5 mm crochet hook

tapestry needle

stitch marker

GAUGE/TENSION

21sts and 8.5rows to measure 10x10cm over dc using a 3.5 hook

ABBREVIATIONS-US TERMS

ch chain

sc single crochet

dc double crochet

sl st slipstitch

cluster = group of 3 dc

MEASUREMENT

200cm x 35 cm and 292 g

PATTERN NOTES

-this scarf is started from the middle, making optimal use of the color gradient of the yarn

-crochet the sc row in the 'bump' or back loop of the ch. This gives you a 'v' on both sides

-for the rows with color B do not insert your crochet hook into the 'v' but between two dc

-increase in the corners by crocheting an extra sc bow with color A and fill them with a color B cluster.



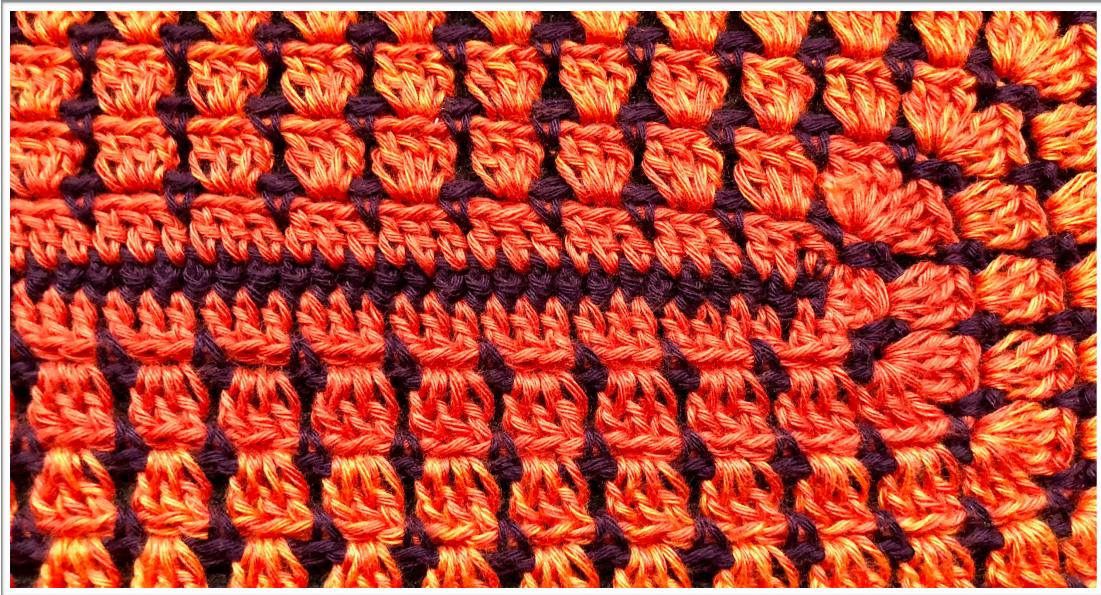
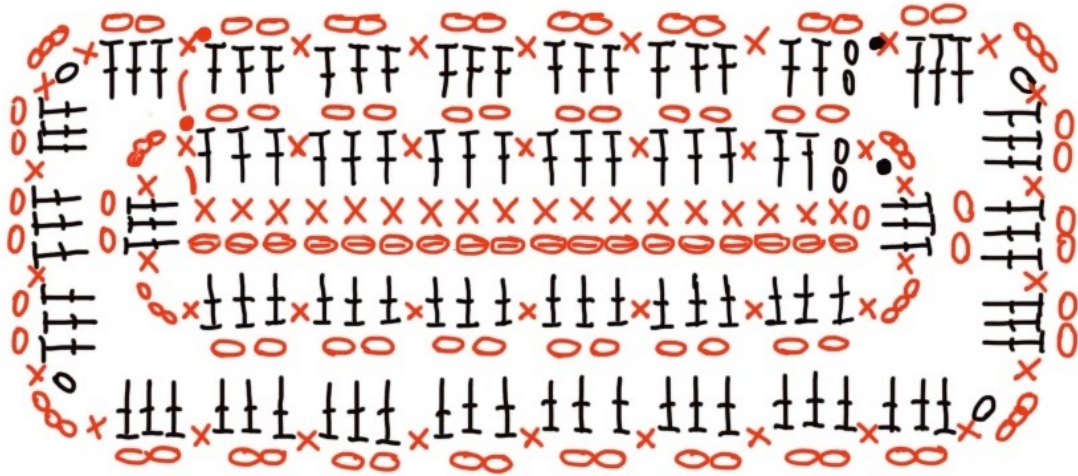
Pattern

1. With **color A** 333 ch plus one turning ch
2. In the 'bump' 333 sc, use stitch marker to secure this stitch
3. With color B start in the first sc, 333dc, 3dc in the same last stitch and then back 133dc and 3dc in the same last stitch, close with a sl st and secure this stitch with a stitch marker.
4. Stick you needle between stitch 333 and 334, grap **color A** and sc, ch3 ands in the same stitch, ch2, skip 3 dc and sc in next stitch. *ch2, skip 3 dc, sc in next stitch* repeat 110x, ch3 and a sc in the same stitch, ch2 and skip 3 dc and sc in the next stitch, ch3 and sc in the

This free pattern is available for unlimited personal use. You may print a copy of a pattern or keep a digital copy for personal use only. Please feel free to share links to the relevant posts but do not reproduce or sell any of these patterns (either digitally or in print). Copies of any patterns/tutorials may not be posted online, either as a complete document or in part. You are welcome to sell items made using the patterns, as long as [jellina-creations](http://jellina-creations.nl) is credited as the designer.

same stitch, *ch2, skip 3 dc, sc in next stitch* repeat 110x, close with a sl st and secure this stitch with a stitch marker.

5. Stick your needle under the ch2 space and grab color B, crochet in every ch2 space 3 dc and in the corner in the 3ch space dc3-ch-dc3 Repeat this all around and close with a sl st and secure this stitch with a stitch marker.
6. Stick your needle between a cluster and grab **color A** and sc1 between the dc's. Repeat row 4
7. Repeat row 5 and 6 until you are running out of yarn, in mine case I crochet 15 rows with color B



I hope this pattern is clear.

If there are questions or comments, please feel free to ask.

I hope you have fun making this shawl and I am very curious which color combination you choose!